

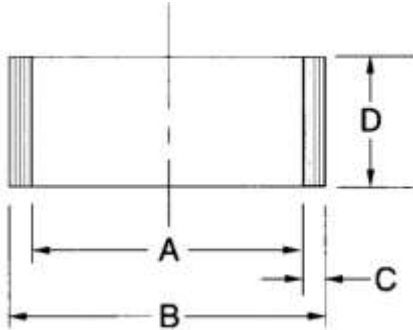


# Pressure Seals, Inc.

Phone: (877)-PSI-SEAL Toll Free  
Thousands of Seals, O-Rings, and U-Cups  
World-Class Service since 1976!



## Metric Wearbands



A large percentage of our metric wear bands are supplied in a glass-filled nylon material due to their low cost and good load bearing properties. Phenolic wear bands are commonly found in many Asian cylinders, so we make them available in many sizes. Suffix "P" indicates phenolic.

Part Number						
Prefix	Outside Diameter B (mm)		Width D (mm)		Max. Wall C (mm)	Material
MWB -	25	X	5.6	X	2.5	
MWB -	25	X	9.7	X	2.5	
MWB -	26	X	9.6	X	3	
MWB -	27	X	5.6	X	2.5	
MWB -	27	X	9.7	X	2.5	
MWB -	28	X	9.6	X	3	
MWB -	29	X	9.6	X	2	
MWB -	30	X	5.6	X	2.5	
MWB -	30	X	9.6	X	3	
MWB -	32	X	5.6	X	2.5	
MWB -	32	X	9.6	X	3	
MWB -	32	X	9.7	X	2.5	
MWB -	33	X	5.6	X	2.5	
MWB -	34	X	9.6	X	3	
MWB -	35	X	5.6	X	2.5	
MWB -	35	X	9.6	X	2	
MWB -	35	X	9.7	X	2.5	
MWB -	36	X	9.6	X	3	
MWB -	37	X	5.6	X	2.5	
MWB -	38	X	9.6	X	3	
MWB -	39	X	9.6	X	3	
MWB -	40	X	5.6	X	2.5	
MWB -	40	X	9.6	X	3	
MWB -	40	X	9.7	X	2.5	
MWB -	41	X	5.6	X	2.5	
MWB -	41	X	9.6	X	3	
MWB -	42	X	9.6	X	3	

Part Number						
Prefix	Outside Diameter B (mm)		Width D (mm)		Max. Wall C (mm)	Material
MWB -	44	X	9.6	X	2	
MWB -	45	X	5	X	3	
MWB -	45	X	5.38	X	3	
MWB -	45	X	5.6	X	2.5	
MWB -	45	X	9.6	X	2	
MWB -	45	X	9.7	X	2.5	
MWB -	45	X	15	X	2.5	P
MWB -	46	X	9.6	X	3	
MWB -	49.9	X	19	X	3.2	
MWB -	50	X	5	X	3	
MWB -	50	X	5.6	X	2.5	
MWB -	50	X	9.6	X	3	
MWB -	50	X	9.7	X	2.5	
MWB -	50	X	15	X	2.5	P
MWB -	51	X	9.6	X	3	
MWB -	52	X	9.6	X	3	
MWB -	52	X	12.8	X	3	
MWB -	55	X	5.6	X	2.5	
MWB -	55	X	8	X	2.5	
MWB -	55	X	9.7	X	2.5	
MWB -	55	X	12.8	X	3	
MWB -	55	X	15	X	2.5	P
MWB -	56	X	5	X	3	
MWB -	56	X	9.6	X	3	
MWB -	56	X	15	X	2.5	
MWB -	56	X	28	X	3	
MWB -	58	X	9.6	X	3	

Pressure Seals Inc. 81 Commerce Way, South Windsor, CT 06074

Phone: (877)-PSI-SEAL Toll Free, In CT: (860) 282-9100, Fax: (860) 282-9001



# Pressure Seals, Inc.

Phone: (877)-PSI-SEAL Toll Free  
 Thousands of Seals, O-Rings, and U-Cups  
 World-Class Service since 1976!



## Metric Wearbands Continued

Part Number						Part Number							
Prefix	Outside Diameter B (mm)		Width D (mm)		Max. Wall C (mm)	Material	Prefix	Outside Diameter B (mm)		Width D (mm)		Max. Wall C (mm)	Material
MWB -	59.9	X	19	X	3.2		MWB -	74.4	X	10	X	3.2	
MWB -	60	X	5.6	X	2.5		MWB -	74.4	X	25	X	3.2	
MWB -	60	X	9.7	X	2.5		MWB -	75	X	5.6	X	2.5	
MWB -	60	X	12.8	X	3		MWB -	75	X	9.7	X	2.5	
MWB -	60	X	15	X	2.5	P	MWB -	75	X	10	X	2.5	
MWB -	61	X	5.6	X	2.5		MWB -	75	X	12.8	X	3	
MWB -	61	X	9.6	X	3		MWB -	75	X	20	X	2.5	P
MWB -	61	X	9.7	X	2.5		MWB -	76	X	12.8	X	3	
MWB -	62	X	12.8	X	3		MWB -	78	X	12.8	X	3	
MWB -	62	X	28	X	3		MWB -	79	X	12.8	X	3	
MWB -	63	X	5.6	X	2.5		MWB -	80	X	5.6	X	2.5	
MWB -	63	X	7.5	X	3.8		MWB -	80	X	7.5	X	4.8	
MWB -	63	X	9.7	X	2.5		MWB -	80	X	9.7	X	2.5	
MWB -	63	X	10	X	3		MWB -	80	X	9.7	X	2.5	
MWB -	63	X	12.8	X	3		MWB -	80	X	10	X	2.5	P
MWB -	65	X	5.6	X	2.5		MWB -	80	X	10	X	3	
MWB -	65	X	9.7	X	2.5		MWB -	80	X	10.38	X	3	
MWB -	65	X	12.8	X	3		MWB -	80	X	12.8	X	3	
MWB -	65	X	20	X	2.5	P	MWB -	80	X	15	X	2.5	
MWB -	66	X	12.8	X	3		MWB -	80	X	15	X	2.5	
MWB -	67	X	12.8	X	3		MWB -	80	X	20	X	2.5	
MWB -	68	X	5.6	X	2.5		MWB -	80	X	20	X	2.5	
MWB -	68	X	9.7	X	2.5		MWB -	80	X	25	X	2.5	P
MWB -	68	X	12.8	X	3		MWB -	81	X	12.8	X	3	
MWB -	69	X	12.8	X	3		MWB -	82	X	12.8	X	3	
MWB -	69	X	28	X	3		MWB -	84	X	12.8	X	3	
MWB -	70	X	5.6	X	2.5		MWB -	85	X	5.6	X	2.5	
MWB -	70	X	7.5	X	3.8		MWB -	85	X	9.7	X	2.5	
MWB -	70	X	10	X	2.5	P	MWB -	85	X	12.8	X	3	
MWB -	70	X	10	X	2.5		MWB -	85	X	15	X	3	P
MWB -	70	X	10	X	3		MWB -	85	X	25	X	3	P
MWB -	70	X	10.38	X	3		MWB -	86	X	12.8	X	3	
MWB -	70	X	12.8	X	3		MWB -	90	X	5.6	X	2.5	
MWB -	70	X	15	X	2.5		MWB -	90	X	7.5	X	3.8	
MWB -	70	X	20	X	2.5	P	MWB -	90	X	7.5	X	4.8	
MWB -	71	X	12.8	X	3		MWB -	90	X	9.7	X	2.5	
MWB -	72	X	12.8	X	3		MWB -	90	X	9.7	X	2.5	
MWB -	73	X	12.8	X	3		MWB -	90	X	12.8	X	3	
MWB -	74	X	22.3	X	2		MWB -	90	X	15	X	2.5	

Pressure Seals Inc. 81 Commerce Way, South Windsor, CT 06074

Phone: (877)-PSI-SEAL Toll Free, In CT: (860) 282-9100, Fax: (860) 282-9001



# Pressure Seals, Inc.

Phone: (877)-PSI-SEAL Toll Free  
 Thousands of Seals, O-Rings, and U-Cups  
 World-Class Service since 1976!



## Metric Wearbands Continued

Part Number						Part Number							
Prefix	Outside Diameter B (mm)		Width D (mm)		Max. Wall C (mm)	Material	Prefix	Outside Diameter B (mm)		Width D (mm)		Max. Wall C (mm)	Material
MWB -	90	X	15	X	2.5		MWB -	110	X	12.8	X	3	
MWB -	90	X	15	X	3	P	MWB -	110	X	15	X	2.5	
MWB -	90	X	15	X	3		MWB -	110	X	15	X	3	
MWB -	90	X	15.38	X	3		MWB -	110	X	15	X	3	P
MWB -	90	X	24.5	X	3		MWB -	110	X	25	X	3	P
MWB -	90	X	25	X	3	P	MWB -	110	X	25	X	3	
MWB -	90	X	25	X	3		MWB -	111	X	12.8	X	3	
MWB -	90	X	25	X	3		MWB -	112	X	12.8	X	3	
MWB -	91	X	12.8	X	3		MWB -	115	X	9.7	X	2.5	
MWB -	92	X	12.8	X	3		MWB -	115	X	12.8	X	3	
MWB -	93	X	12.8	X	3		MWB -	115	X	15	X	3	
MWB -	95	X	5.6	X	2.5		MWB -	115	X	15.38	X	3	
MWB -	95	X	9.7	X	2.5		MWB -	116	X	12.8	X	3	
MWB -	95	X	12.8	X	3		MWB -	119	X	12.8	X	3	
MWB -	95	X	15	X	3	P	MWB -	120	X	8	X	2.5	P
MWB -	95	X	25	X	3	P	MWB -	120	X	9.7	X	2.5	
MWB -	96	X	12.8	X	3		MWB -	120	X	12.8	X	3	
MWB -	97	X	12.8	X	3		MWB -	120	X	15	X	2.5	
MWB -	100	X	5.6	X	2.5		MWB -	120	X	15	X	3	P
MWB -	100	X	8	X	3		MWB -	120	X	30	X	3	P
MWB -	100	X	9.7	X	2.5		MWB -	120	X	30	X	3	
MWB -	100	X	12.8	X	3		MWB -	120	X	30	X	3.5	
MWB -	100	X	15	X	2.5		MWB -	121	X	12.8	X	3	
MWB -	100	X	15	X	3	P	MWB -	125	X	5.6	X	2.5	
MWB -	100	X	15	X	3		MWB -	125	X	8	X	2.5	P
MWB -	100	X	15.38	X	3		MWB -	125	X	9.7	X	2.5	
MWB -	100	X	15.38	X	3		MWB -	125	X	12.8	X	3	
MWB -	100	X	25	X	3	P	MWB -	125	X	15	X	3	
MWB -	100	X	25	X	3		MWB -	125	X	15	X	3	P
MWB -	101	X	12.8	X	3		MWB -	125	X	20	X	3	
MWB -	105	X	5.6	X	2.5		MWB -	125	X	30	X	3	P
MWB -	105	X	9.7	X	2.5		MWB -	126	X	12.8	X	3	
MWB -	105	X	12.8	X	3		MWB -	130	X	9.7	X	2.5	
MWB -	105	X	15.88	X	3.18		MWB -	130	X	12.8	X	3	
MWB -	105	X	24.5	X	3		MWB -	130	X	15	X	3.5	
MWB -	105	X	25	X	3	P	MWB -	130	X	15	X	3.5	P
MWB -	105	X	60	X	2.5		MWB -	130	X	30	X	3.5	P
MWB -	106	X	12.8	X	3		MWB -	130	X	30	X	3.5	
MWB -	110	X	9.7	X	2.5		MWB -	131	X	12.8	X	3	

Pressure Seals Inc. 81 Commerce Way, South Windsor, CT 06074

Phone: (877)-PSI-SEAL Toll Free, In CT: (860) 282-9100, Fax: (860) 282-9001



# Pressure Seals, Inc.

Phone: (877)-PSI-SEAL Toll Free  
Thousands of Seals, O-Rings, and U-Cups  
World-Class Service since 1976!



## Metric Wearbands Continued

Part Number						Part Number							
Prefix	Outside Diameter B (mm)		Width D (mm)		Max. Wall C (mm)	Material	Prefix	Outside Diameter B (mm)		Width D (mm)		Max. Wall C (mm)	Material
MWB -	135	X	12.8	X	3		MWB -	160	X	40	X	3.5	P
MWB -	136	X	12.8	X	3		MWB -	165	X	19.2	X	3	
MWB -	140	X	9.7	X	2.5		MWB -	165	X	100	X	2.5	
MWB -	140	X	12.8	X	3		MWB -	166	X	19.2	X	3	
MWB -	140	X	15	X	2.5		MWB -	168	X	19.2	X	3	
MWB -	140	X	15	X	3		MWB -	170	X	15	X	3	P
MWB -	140	X	17.5	X	3.5		MWB -	170	X	25	X	4	P
MWB -	140	X	20	X	3		MWB -	170	X	30	X	3	P
MWB -	140	X	20	X	3.5	P	MWB -	170	X	50	X	3	P
MWB -	140	X	20	X	3.5		MWB -	175	X	19.2	X	3	
MWB -	140	X	35	X	3.5		MWB -	176	X	19.2	X	3	
MWB -	140	X	35	X	3.5	P	MWB -	180	X	19.2	X	3	
MWB -	141	X	12.8	X	3		MWB -	180	X	20	X	3	
MWB -	145	X	9.5	X	3.5	P	MWB -	180	X	22.5	X	4	
MWB -	145	X	12.8	X	3		MWB -	180	X	23	X	5	P
MWB -	145	X	20	X	3.5		MWB -	180	X	25	X	4	P
MWB -	146	X	12.8	X	3		MWB -	180	X	45	X	4	
MWB -	149	X	12.8	X	3		MWB -	185	X	19.2	X	3	
MWB -	150	X	9.7	X	2.5		MWB -	186	X	19.2	X	3	
MWB -	150	X	12.8	X	3		MWB -	190	X	19.2	X	3	
MWB -	150	X	14.8	X	3	P	MWB -	190	X	25	X	4	P
MWB -	150	X	20	X	3.5	P	MWB -	190	X	45	X	4	
MWB -	150	X	20	X	3.5		MWB -	195	X	19.2	X	3	
MWB -	150	X	20	X	3.5		MWB -	196	X	19.2	X	3	
MWB -	150	X	35	X	3.5	P	MWB -	200	X	19.2	X	3	
MWB -	150	X	35	X	3.5		MWB -	200	X	22.5	X	4	
MWB -	151	X	12.8	X	3		MWB -	200	X	25	X	4	P
MWB -	155	X	12.8	X	3		MWB -	200	X	40	X	5	P
MWB -	155	X	19.2	X	3		MWB -	200	X	45	X	4	P
MWB -	156	X	12.8	X	3		MWB -	206	X	19.2	X	3	
MWB -	160	X	9.7	X	2.5		MWB -	210	X	19.2	X	3	
MWB -	160	X	15	X	2.5		MWB -	216	X	19.2	X	3	
MWB -	160	X	15	X	3		MWB -	220	X	19.2	X	3	
MWB -	160	X	19.2	X	3		MWB -	224	X	45	X	4	
MWB -	160	X	20	X	3		MWB -	225	X	25	X	4	P
MWB -	160	X	20	X	3.5	P	MWB -	225	X	25	X	4	
MWB -	160	X	20	X	3.5		MWB -	225	X	50	X	4	P
MWB -	160	X	20	X	3.5		MWB -	226	X	19.2	X	3	
MWB -	160	X	40	X	3.5		MWB -	230	X	19.2	X	3	

Pressure Seals Inc. 81 Commerce Way, South Windsor, CT 06074

Phone: (877)-PSI-SEAL Toll Free, In CT: (860) 282-9100, Fax: (860) 282-9001



# Pressure Seals, Inc.

Phone: (877)-PSI-SEAL Toll Free  
 Thousands of Seals, O-Rings, and U-Cups  
 World-Class Service since 1976!



## Metric Wearbands Continued

Part Number						
Prefix	Outside Diameter B (mm)		Width D (mm)		Max. Wall C (mm)	Material
MWB -	236	X	19.2	X	3	P
MWB -	240	X	19.2	X	3	
MWB -	246	X	19.2	X	3	
MWB -	250	X	19.2	X	3	
MWB -	250	X	55	X	4	
MWB -	256	X	19.2	X	3	
MWB -	260	X	19.2	X	3	
MWB -	266	X	19.2	X	3	

Part Number						
Prefix	Outside Diameter B (mm)		Width D (mm)		Max. Wall C (mm)	Material
MWB -	270	X	19.2	X	3	P
MWB -	276	X	19.2	X	3	
MWB -	280	X	19.2	X	3	
MWB -	280	X	60	X	4	
MWB -	286	X	19.2	X	3	
MWB -	290	X	19.2	X	3	
MWB -	296	X	19.2	X	3	
MWB -	300	X	19.2	X	3	