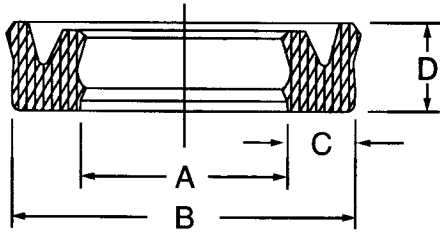


PRESSURE SEALS INC.

BS Type Urethane Rod U-Cups



The "BS" series hydraulic rod seal is ideally suited for heavy-duty mobile and stationary service where leakage must be held to an absolute minimum. This unique geometry is highly resistant to side loading and insensitive to pressure spikes. The "BS" profile reduces or eliminates leakage under severe operating conditions. The "BS" profile reduces wear and "dry run". Rod lubricant is retained in the cavity formed by the secondary lip providing exceptionally low running friction even at low velocities. Sealing performance is outstanding ... even at 0 PSI.

Part Number	Inside Dia. A	Outside Dia. B	Height D	Part Number	Inside Dia. A	Outside Dia. B	Height D
-------------	---------------	----------------	----------	-------------	---------------	----------------	----------

.12" CROSS SECTION ("C")							
BS-12001000-187	1	1.240	3/16	BS-12001125-192	1-1/8	1.365	.192
1/8" CROSS SECTION ("C")							
BS-12500625-250	5/8	7/8	1/4	BS-12501250-250	1-1/4	1-1/2	1/4
BS-12500750-187	3/4	1	3/16	BS-12501375-187	1-3/8	1-5/8	3/16
BS-12500750-250	3/4	1	1/4	BS-12501375-250	1-3/8	1-5/8	1/4
BS-12501000-187	1	1-1/4	3/16	BS-12501500-187	1-1/2	1-3/4	3/16
BS-12501000-250	1	1-1/4	1/4	BS-12501500-250	1-1/2	1-3/4	1/4
BS-12501062-187	1-1/16	1-5/16	3/16	BS-12501625-250	1-5/8	1-7/8	1/4
BS-12501062-250	1-1/16	1-5/16	1/4	BS-12501750-250	1-3/4	2	1/4
BS-12501125-250	1-1/8	1-3/8	1/4	BS-12502000-187	2	2-1/4	3/16
BS-12501250-187	1-1/4	1-1/2	3/16	BS-12502000-250	2	2-1/4	1/4
.137" CROSS SECTION ("C")							
BS-13701125-187	1-1/8	1.399	3/16				
5/32" CROSS SECTION ("C")							
BS-15601000-250	1	1-5/16	1/4	BS-15601375-250	1-3/8	1-11/16	1/4
3/16" CROSS SECTION ("C")							
BS-18700875-250	7/8	1-1/4	1/4	BS-18701750-250	1-3/4	2-1/8	1/4
BS-18701000-250	1	1-3/8	1/4	BS-18701750-312	1-3/4	2-1/8	5/16
BS-18701000-312	1	1-3/8	5/16	BS-18701750-375	1-3/4	2-1/8	3/8
BS-18701125-312	1-1/8	1-1/2	5/16	BS-18701875-375	1-7/8	2-1/4	3/8
BS-18701250-227	1-1/4	1-5/8	.227	BS-18702000-312	2	2-3/8	5/16
BS-18701250-312	1-1/4	1-5/8	5/16	BS-18702000-375	2	2-3/8	3/8
BS-18701375-312	1-3/8	1-3/4	5/16	BS-18702125-375	2-1/8	2-1/2	3/8
BS-18701500-250	1-1/2	1-7/8	1/4	BS-18702250-335	2-1/4	2-5/8	.335
BS-18701500-312		1-7/8	5/16	BS-18702250-375	2-1/4	2-5/8	3/8
BS-18701500-375	1-1/2	1-7/8	3/8	BS-18702750-375	2-3/4	3-1/8	3/8
BS-18701625-281	1-5/8	2	9/32	BS-18703125-625	3-1/8	3-1/2	5/8
BS-18701625-375	1-5/8	2	3/8	BS-18703250-375	3-1/4	3-5/8	3/8
7/32" CROSS SECTION ("C")							
BS-21802500-375	2-1/2	2-15/16	3/8	BS-21803000-375	3	3-7/16	3/8
1/4" CROSS SECTION ("C")							
BS-25000875-341	7/8	1-3/8	.341	BS-25001500	1-1/2	2	1/4
BS-25001000-341	1	1-1/2	.341	BS-25001500-341	1-1/2	2	.341
BS-25001000-375	1	1-1/2	3/8	BS-25001500-375	1-1/2	2	3/8
BS-25001125	1-1/8	1-5/8	1/4	BS-25001750-341	1-3/4	2-1/4	.341
BS-25001250-375	1-1/4	1-3/4	3/8	BS-25001750-375	1-3/4	2-1/4	3/8
BS-25001375-375	1-3/8	1-7/8	3/8	BS-25001750-500	1-3/4	2-1/4	1/2

PRESSURE SEALS INC.

BS Type Urethane Rod U-Cups, cont'd.

Part Number	Inside Dia. A	Outside Dia. B	Height D		Part Number	Inside Dia. A	Outside Dia. B	Height D
-------------	---------------	----------------	----------	--	-------------	---------------	----------------	----------

1/4 CROSS SECTION (C) cont								
BS-25001875-375	1-7/8	2-3/8	3/8		BS-25003500-375	3-1/2	4	3/8
BS-25002000-312	2	2-1/2	5/16		BS-25004000-375	4	4-1/2	3/8
BS-25002000-341	2	2-11/2	.341		BS-25004000-562	4	4-1/2	9/16
BS-25002000-375	2	2-1/2	3/8		BS-25004000-781	4	4-1/2	25/32
BS-25002250-341	2-1/4	2-3/4	.341		BS-25004250-562	4-1/4	4-3/4	9/16
BS-25002250-375	2-1/4	2-3/4	3/8		BS-25004500-375	4-1/2	5	3/8
BS-25002500-284	2-1/2	3	.284		BS-25005000-375	5	5-1/2	3/8
BS-25002500-375	2-1/2	3	3/8		BS-25005000-562	5	5-1/2	9/16
BS-25002625-375	2-5/8	3-1/8	3/8		BS-25005000-781	5	5-1/2	25/32
BS-25002750-375	2-3/4	3-1/4	3/8		BS-25005500-375	5-1/2	6	3/8
BS-25003000-375	3	3-1/2	3/8		BS-25006000-781	6	6-1/2	25/32
BS-25003000-625	3	3-1/2	5/8		BS-25006500-375	6-1/2	7	3/8
BS-25003250-375	3-1/4	3-3/4	3/8					
			.266"	CROSS SECTION ("C")				
BS-26605000-557	5	5-17/32	.557		BS-26607000-562	7	7-17/32	9/16
BS-26606000-562	6	6-17/32	9/16					
			5/16"	CROSS SECTION ("C")				
BS-31201125-397	1-1/8	1-3/4	.397		BS-31202625-625	2-5/8	3-1/4	5/8
BS-31201250-397	1-1/4	1-7/8	.397		BS-31202750-500	2-3/4	3-3/8	1/2
BS-31201375-397	1-3/8	2	.397		BS-31203000-500	3	3-5/8	1/2
BS-31201500-397	1-1/2	2-1/8	.397		BS-31203375-594	3-3/8	4	.594
BS-31201875-397	1-7/8	2-1/2	.397		BS-31203500-500	3-1/2	4-1/8	1/2
BS-31202000	2	2-5/8	5/16		BS-31204000-500	4	4-5/8	1/2
BS-31202000-397	2	2-5/8	.397		BS-31204500-500	4-1/2	5-1/8	1/2
BS-31202000-500	2	2-5/8	1/2		BS-31204625-625	4-5/8	5-1/4	5/8
BS-31202500-500	2-1/2	3-1/8	1/2		BS-31205000-500	5	5-5/8	1/2
			3/8"	CROSS SECTION ("C")				
BS-37502000-625	2	2-3/4	5/8		BS-37504500-625	4-1/2	5-1/4	5/8
BS-37502250-511	2-1/4	3	.511		BS-37505000-500	5	5-3/4	1/2
BS-37502500-625	2-1/2	3-1/4	5/8		BS-37505000-625	5	5-3/4	5/8
BS-37502750-625	2-3/4	3-1/2	5/8		BS-37505500-625	5-1/2	6-1/4	5/8
BS-37503000-625	3	3-3/4	5/8		BS-37506000-625	6	6-3/4	5/8
BS-37503500-625	3-1/2	4-1/4	5/8		BS-37506500-625	6-1/2	7-1/4	5/8
BS-37504000-625	4	4-3/4	5/8		BS-37507000-625	7	7-3/4	5/8
BS-37504250-625	4-1/4	5	5/8		BS-37507750-625	7-3/4	8-1/2	5/8
			7/16"	CROSS SECTION ("C")				
BS-43703875-750	3-7/8	4-3/4	3/4		BS-43704750-750	4-3/4	5-5/8	3/4