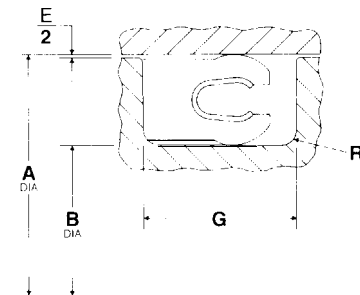
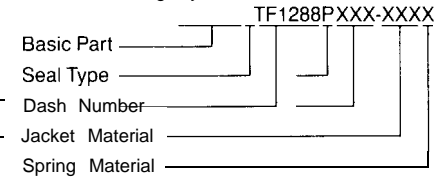


Dash No.	A Dia.		Dash No.	B Dia.		Dash No.	A Dia.		Dash No.	B Dia.		Dash No.	A Dia.		Dash No.	B Dia.	
	001	001		001	001		001	001		002	001		002	002		001	002
006	250	125	122	1312	1125	225	2125	1 875	326	2000	1625	405	2 500	2000			
007	.281	.156	123	1375	1187	226	2 250	2 000	327	2125	1750	406	2625	2125			
00%	.312	.187	124	1437	1.250	227	2375	2 000	328	2 250	1875	407	2750	2250			
009	.343	.218	125	1500	1312	228	2500	2 250	329	2375	2 000	408	2875	2 375			
010	.375	.250	126	1562	1375	229	2625	2 375	330	2 500	2125	409	3000	2 500			
011	.437	.312	127	1.625	1437	230	2 750	2500	331	2625	2 250	410	3125	2625			
012	500	375	128	1.687	1500	231	2875	2625	332	2750	2 375	411	3250	2750			
013	.562	.437	129	1750	1562	232	3000	2 750	333	2875	2 500	412	3375	2875			
014	625	.500	130	1812	1.625	233	3125	2875	334	3000	2625	413	3500	3000			
015	.687	562	131	1.875	1687	234	3250	3000	335	3125	2750	414	3625	3125			
016	750	625	132	1.937	1750	235	3 375	3125	336	3 250	2875	415	3750	3250			
017	812	.687	133	2.000	1812	236	3500	3 250	337	3 375	3 000	416	3875	3375			
018	.875	.750	134	2062	1875	237	3625	3375	338	3 500	3125	417	4000	3.500			
019	.937	.812	135	2.125	1937	238	3750	3500	339	3 625	3250	418	4125	3 625			
020	1.000	.875	136	2.187	2000	239	3 875	3625	340	3 750	3375	419	4250	3 750			
021	1.062	.937	137	2.250	2062	240	4000	3 750	341	3875	3500	420	4375	3875			
022	1 125	1.000	138	2312	2.125	241	4125	3875	342	4000	3625	421	4500	4 000			
023	1.187	1.062	139	2.375	2.187	242	4250	4000	343	4125	3 750	422	4625	4 125			
024	1.250	1.125	140	2.437	2.250	243	4375	4125	344	4250	3875	423	4 750	4.250			
025	1.312	1.187	141	2 500	2.312	244	4500	4250	345	4375	4000	424	4875	4375			
026	1.375	1.250	142	2562	2.375	245	4625	4375	346	4 500	4125	425	5 000	4.500			
027	1.437	1312	143	2625	2 437	246	4750	4 500	347	4 625	4250	426	5125	4625			
028	1.500	1.375	144	2687	2.500	247	4875	4625	348	4750	4 375	427	5250	4 750			
029	1.625	1500	145	2750	2.562	248	5 000	4750	349	4875	4500	428	5375	4875			
030	1750	1.625	146	2.812	2.625	249	5125	4.875	350	5000	4 625	429	5500	5 000			
031	1.875	1750	147	2 875	2.687	250	5.250	5000	351	5125	4 750	430	5625	5125			
032	2.000	1875	148	2937	2 750	251	5 375	5125	352	5250	4 875	431	5750	5250			
033	2.125	2000	149	3000	2.812	252	5.500	5.250	353	5375	5 000	432	5875	5375			
034	2.250	2125	150	3062	2.875	253	5.625	5375	354	5500	5125	433	6000	5500			
035	2.375	2 250	151	3187	3.000	254	5.750	5.500	355	5625	5 250	434	6125	5 625			
036	2.500	2 375	152	2.437	3.250	255	5875	5625	356	5 750	5375	435	6250	5 750			
037	2.625	2.500	153	3687	3500	256	6000	5.750	357	5875	5 500						
038	2.750	2 625	154	3 937	3750	257	6125	5875	358	6000	5 625						
039	2.875	2 750	155	4.187	4.000	258	6.250	6.000	359	6125	5 750	436	6.375	5875			
040	3.000	2.875	156	4437	4 250	259	6 500	6 250	360	6250	5875	437	6500	6000			
041	3125	3.000	157	4687	4500	260	6750	6500	361	6375	6000	438	6750	6 250			
042	3375	3250	158	4937	4750	261	7000	6 750	362	6625	6 250	439	7 000	6500			
043	3625	3.500	159	5.187	5000	262	7250	7000	363	6 875	6500	440	7 250	6750			
044	3875	3.750	160	5 437	5 250	263	7.500	7.250	364	7125	6750	441	7 500	7 000			
045	4125	4000	161	5.687	5.500	264	7750	7500	365	7375	7 000	442	7750	7250			
046	4375	4250	208	875	625	265	8000	7750	366	7625	7250	443	8000	7 500			
106	375	187	209	937	687	266	8.250	8 000	367	7 875	7 500	444	8250	7 750			
107	406	219	210	1 000	750	267	8500	8250	368	8125	7 750	445	8 500	8000			
108	437	250	211	1062	.812	268	8750	8500	369	8375	8 000	446	9000	a 500			
109	500	312	212	1125	875	269	9000	8750	370	8625	8250	447	9500	9000			
110	562	375	213	1187	.937	270	9 250	9000	371	8 875	8500	448	10000	9500			
111	625	437	214	1250	1000	316	1250	875	372	9125	8 750	449	10500	10000			
112	687	500	215	1312	1.062	317	1312	937	373	9375	9 000	450	11 000	10500			
113	750	562	216	1375	1125	318	1375	1 000	374	9625	9 250	451	11 500	11 000			
114	812	625	217	1437	1187	319	1437	1062	375	9875	9 500	452	12000	11 500			
115	875	687	218	1500	1250	320	1500	1125	376	10 125	9750	453	12 500	12000			
116	937	750	219	1562	1312	321	562	1187	377	10375	10000	454	13000	12 500			
117	1000	812	220	1625	1375	322	.625	1250	378	10875	10500	455	13500	13000			
118	1062	875	221	1687	1437	323	687	1312	401	2 000	1500	456	14 000	13500			
119	1125	937	222	1750	1500	324	750	1375	402	2125	1625	457	14 500	14000			
120	1187	1000	223	1875	1625	325	875	1500	403	2250	1750	458	15000	14 500			
121	1250	1062	224	2000	1750				404	2375	1 875	459	15500	15000			
												460	16000	15 500			



Dash No.	G Groove Width +.010-.000	R Groove Radius	E Diametral Clearance Max.
006-012	.094	.005-.015	.004
013-046	.094	.005-.015	.005
106-1 29	.141	.005-.015	.005
130-161	.141	.005-.015	.006
208-270	.188	.010-.025	.006
316-324	.281	.020-.035	.006
325-378	.281	.020-.035	.007
401-460	.375	.020-.035	.010

Part Numbering System



Jacket Material Code	Spring Material Code
Code Description	Code Description
001 Virgin TFE	A 301 SST
300 Polymer-filled TFE. Tetralon® 720	B Inconel 718
430 Tetralon® wear-resistant virgin TFE	C Elgiloy®
490 Glass-Moly-filled TFE	D Hastelloy C
600 Carbon-Graphite-filled TFE	E 304 SST
	F 17-7PH SST
	G 316 SST
	H 302 SST

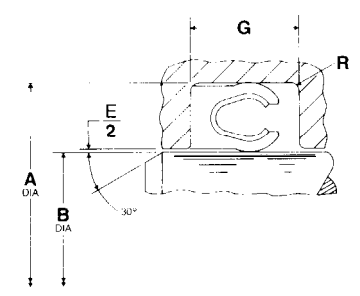
PSI  
Info. Provided by  
Tetrafluor. Inc.

**SEAL INSTALLATION**  
O.D. MOUNTED, DYNAMIC ONLY  
COMMERCIAL-INDUSTRIAL STANDARD  
PISTON SEALS

CODE IDENT  
07128

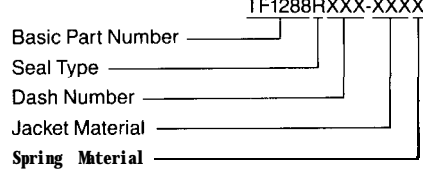
# TF1 288P

Dash No.	A Dia.	B Dia.	Dash No.	A Dia.	B Dia.	Dash No.	A Dia.	B Dia.	Dash No.	A Dia.	B Dia.	Dash No.	A Dia.	B Dia.
006	250	125	122	1312	1125	225	2.125	1 a75	326	2.000	1625	405	2500	2000
007	281	156	123	1375	1187	226	2.250	2000	327	2125	1750	406	2625	2125
008	312	187	124	1.437	1.250	227	2.375	2.125	328	2.250	1 a75	407	2.750	2.250
009	.343	218	125	1.500	1312	228	2500	2.250	329	2375	2000	408	2.875	2375
010	.375	250	126	1.562	1.375	229	2.625	2.375	330	2.500	2125	409	3000	2.500
011	437	312	127	1.625	1.437	230	2.750	2.500	331	2625	2.250	410	3125	2.625
012	.500	375	128	1687	1.500	231	2875	2.625	332	2.750	2.375	411	3.250	2.750
013	562	437	129	1750	1.562	232	3.000	2750	333	2.875	2.500	412	3375	2.875
014	.625	500	130	1.812	1.625	233	3.125	2.875	334	3000	2625	413	3.500	3000
015	687	.562	131	1.875	1.687	234	3.250	3.000	335	3125	2.750	414	3.625	3125
016	750	625	132	1.937	1.750	235	3.375	3.125	336	3.250	2.875	415	3.750	3.250
017	.812	687	133	2.000	1.812	236	3.500	3.250	337	3.375	3000	416	3875	3.375
018	.a75	750	134	2.062	1 a75	237	3.625	3.375	338	3.500	3125	417	4000	3.500
019	.937	812	135	2.125	1.937	238	3.750	3500	339	3.625	3.250	418	4125	3.625
020	1.000	.875	136	2.187	2.000	239	3.875	3625	340	3.750	3.375	419	4250	3.750
021	1.062	.937	137	2250	2.062	240	4.000	3.750	341	3.875	3500	420	4.375	3.875
022	1.125	1.000	138	2.312	2.125	241	4125	3.875	342	4.000	3.625	421	4.500	4.000
023	1.187	1.062	139	2.375	2.187	242	4.250	4.000	343	4.125	3750	422	4.625	4125
024	1.250	1.125	140	2.437	2.250	243	4.375	4.125	344	4250	3.875	423	4750	4.250
025	1.312	1.187	141	2.500	2.312	244	4.500	4.250	345	4375	4.000	424	4.875	4375
026	1.375	1.250	142	2.562	2.375	245	4.625	4.375	346	4.500	4.125	425	5000	4500
027	1.437	1312	143	2.625	2.437	246	4.750	4500	347	4625	4.250	426	5125	4.625
028	1.500	1.375	144	2.687	2.500	247	4.875	4625	348	4.750	4.375	427	5.250	4.750
029	1.625	1.500	145	2.750	2.562	248	5000	4.750	349	4875	4.500	428	5.375	4.875
030	1750	1.625	146	2.812	2.625	249	5.125	4.875	350	5000	4.625	429	5.500	5.000
031	1.875	1750	147	2.875	2.687	250	5.250	5.000	351	5125	4.750	430	5.625	5125
032	2.000	1.875	148	2.937	2.750	251	5.375	5.125	352	5.250	4.875	431	5.750	5.250
033	2.125	2000	149	3.000	2.812	252	5.500	5.250	353	5.375	5.000	432	5875	5.375
034	2.250	2.125	150	3.062	2.875	253	5.625	5.375	354	5500	5125	433	6000	5.500
035	2.375	2.250	151	3.187	3000	254	5.750	5.500	355	5625	5.250	434	6.125	5625
036	2.500	2.375	152	2.437	3250	255	5875	5.625	356	5750	5.375	435	6.250	5.750
037	2.625	2.500	153	3.687	3.500	256	6000	5750	357	5.875	5.500			
038	2.750	2.625	154	3937	3.750	257	6.125	5.875	358	6.000	5.625			
039	2875	2.750	155	4.187	4.000	258	6.250	6.000	359	6.125	5.750	436	6.375	5875
040	3.000	2.875	156	4.437	4.250	259	6.500	6.250	360	6250	5875	437	6.500	6000
041	3.125	3.000	157	4.687	4.500	260	6.750	6.500	361	6.375	6.000	438	6.750	6250
042	3.375	3.250	158	4.937	4.750	261	7000	6750	362	6625	6250	439	7000	6.500
043	3.625	3.500	159	5.187	5.000	262	7.250	7000	363	6.875	6500	440	7250	6.750
044	3.875	3.750	160	5.437	5.250	263	7.500	7.250	364	7.125	6750	441	7500	7.000
045	4.125	4.000	161	5.687	5.500	264	7.750	7500	365	7.375	7.000	442	7.750	7.250
046	4375	4.250	208	a75	625	265	8.000	7750	366	7.625	7.250	443	8.000	7.500
106	375	.187	209	.937	687	266	a250	8.000	367	7.875	7.500	444	8.250	7.750
107	406	.219	210	1000	.750	267	8.500	8.250	368	a125	7.750	445	8500	8.000
108	437	250	211	1.062	a12	268	8.750	8.500	369	8375	a.000	446	9.000	8500
109	500	.312	212	1.125	a75	269	9.000	8.750	370	a625	8.250	447	9500	9000
110	562	.375	213	1.187	.937	270	9250	9000	371	8.875	a.500	448	10000	9.500
111	.625	437	214	1.250	1000	316	1250	.875	372	9125	8.750	449	10.500	10000
112	.687	500	215	1.312	1062	317	1312	.937	373	9375	9.000	450	11.000	10.500
113	.750	562	216	1.375	1125	318	1375	1.000	374	9625	9.250	451	11.500	11.000
114	812	625	217	1.437	1187	319	1437	1.062	375	9875	9500	452	12000	11.500
115	a75	687	218	1500	1.250	320	1500	1.125	376	10125	9750	453	12500	12000
116	937	750	219	1.562	1312	321	1562	1.187	377	10.375	10000	454	13000	12500
117	1.000	812	220	1.625	1.375	322	1.625	1.250	378	10.875	10500	455	13500	13000
118	1062	.875	221	1.687	1437	323	1.687	1.312	401	2000	1500	456	14000	13500
119	1.125	937	222	1750	1500	324	1.750	1.375	402	2125	1625	457	14500	14.000
120	1.187	1000	223	1 a75	1625	325	1875	1.500	403	2250	1750	458	15000	14500
121	1250	1062	224	2.000	1750				404		1875	459	15500	15000
												460	16000	15500



Dash No.	G Groove Width +.010-.000	R Groove Radius	E Diametral Clearance Max.
006-012	.094	.005-.015	.004
013-046	.094	.005-.015	.005
106-129	.141	.005-.015	.005
130-161	.141	.005-.015	.006
208-270	.188	.010-.025	.006
316-324	.281	.020-.035	.006
325-378	.281	.020-.035	.007
401-460	.375	.020-.035	.010

**Part Numbering System**



**Jacket Material Code**

Code Description	Code
001 Virgin TFE	A
300 Polymer-filled TFE, Tetralon® 720	B
430 Tetralon® wear-resistant virgin TFE	C
490 Glass-Moly-filled TFE	D
600 Carbon-Graphite-filled TFE	E

**Spring Material Code**

Code Description	Code
A 301 SST	
B Inconel 718	
C Elgiloy™	
D Hastelloy C	
E 304SST	
F 17-7PH SST	
G 316SST	
H 302SST	

PSI  
Info Provided by  
Tetrafluor, Inc

**ROD SEAL INSTALLATION  
COMMERCIAL-INDUSTRIAL  
STANDARD**

CODE IDENT
07128

**TF1288R**