

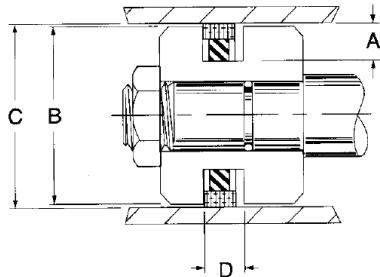
Pressure Seals, Inc.

Phone: (877)-PSI-SEAL Toll Free

Thousands of Seals, O-Rings, and U-Cups
World-Class Service since 1976!



AS900 TFE Piston Seals



AS900 style rectangular piston seal assemblies are supplied with glass-filled TFE outer rings and 70 durometer nitrile lathe cut energizers as standard. Bronze-filled TFE rings are also stocked in many sizes for extra heavy duty applications and larger clearance gaps. For bronze filled TFE assemblies use a multiplier of 1.45 over glass-filled TFE pricing. AS900 style seals provide many cycles of drift-free service to medium and heavy duty cylinder applications.

Part Number	Bore Dia. C +0.025 -0.000	Groove Depth A +0.002 -0.000	Groove Width D +0.005 -0.000	Seal Width D ₁	Seal Wall	Expander Cross Sect	Price
AS900E-16	1.000	0.155	0.125	0.121	0.070	0.099	
AS900E-20	1.250	0.155	0.125	0.121	0.070	0.099	
AS900E-24	1.500	0.155	0.125	0.121	0.070	0.099	
AS900E-28	1.750	0.155	0.125	0.121	0.070	0.099	
AS900E-32	2.000	0.155	0.125	0.121	0.070	0.099	
AS900E-36	2.250	0.155	0.125	0.121	0.070	0.099	
AS900E-40	2.500	0.155	0.125	0.121	0.070	0.099	
AS900E-44	2.750	0.155	0.125	0.121	0.070	0.099	
AS900E-48	3.000	0.278	0.278	0.274	0.090	0.203	
AS900E-50.5	3.150	0.278	0.278	0.274	0.090	0.203	
AS900E-52	3.250	0.278	0.278	0.274	0.090	0.203	
AS900E-56	3.500	0.278	0.278	0.274	0.090	0.203	
AS900E-60	3.750	0.278	0.278	0.274	0.090	0.203	
AS900E-64	4.000	0.278	0.278	0.274	0.090	0.203	
AS900E-68	4.250	0.278	0.278	0.274	0.090	0.203	
AS900E-72	4.500	0.278	0.278	0.274	0.090	0.203	
AS900E-76	4.750	0.278	0.278	0.274	0.090	0.203	
AS900E-80	5.000	0.278	0.278	0.274	0.090	0.203	
AS900E-84	5.250	0.387	0.375	0.367	0.142	0.265	
AS900E-88	5.500	0.387	0.375	0.367	0.142	0.265	

Part Number	Bore Dia. C +0.025 -0.000	Groove Depth A +0.002 -0.000	Groove Width D +0.005 -0.000	Seal Width D ₁	Seal Wall	Expander Cross Sect	Price
AS900E-92	5.750	0.387	0.375	0.367	0.142	0.265	
AS900E-96	6.000	0.387	0.375	0.367	0.142	0.265	
AS900E-100	6.250	0.387	0.375	0.367	0.142	0.265	
AS900E-104	6.500	0.387	0.375	0.367	0.142	0.265	
AS900E-112	7.000	0.387	0.375	0.367	0.142	0.265	
AS900E-116	7.250	0.387	0.375	0.367	0.142	0.265	
AS900E-120	7.500	0.387	0.375	0.367	0.142	0.265	
AS900E-126B	7.875	0.387	0.375	0.367	0.142	0.265	
AS900E-128	8.000	0.387	0.375	0.367	0.142	0.265	
AS900E-132	8.250	0.387	0.375	0.367	0.142	0.265	
AS900E-135B	8.437	0.387	0.375	0.367	0.142	0.265	
AS900E-136	8.500	0.387	0.375	0.367	0.142	0.265	
AS900E-144	9.000	0.445	0.375	0.367	0.202	0.265	
AS900E-152	9.500	0.445	0.375	0.367	0.202	0.265	
AS900E-160	10.000	0.445	0.375	0.367	0.202	0.265	
AS900E-168	10.500	0.445	0.375	0.367	0.202	0.265	
AS900E-176	11.000	0.445	0.375	0.367	0.202	0.265	
AS900E-192	12.000	0.445	0.375	0.367	0.202	0.265	
AS900E-208	13.000	0.445	0.375	0.367	0.202	0.265	
AS900E-224	14.000	0.445	0.375	0.367	0.202	0.265	

AS930 TFE Piston Seals

AS960 TFE Piston Seals

These rectangular piston seal assemblies are manufactured from a rugged bronze filled TFE material and include a 70 durometer lathe cut energizer. The AS930 series are used in many trash equipment cylinders and the AS960 series are found in many logging and construction equipment applications.

Part Number	Bore Dia. C +0.025 -0.000	Groove Depth A +0.002 -0.000	Groove Width D +0.005 -0.000	Seal Width	Seal Wall	Expander Cross Sect	Price
AS930E-40B	2.500	0.278	0.250	0.245	0.090	0.203	
AS930E-64B	4.000	0.278	0.312	0.307	0.090	0.203	
AS930E-72B	4.500	0.278	0.312	0.307	0.090	0.203	
AS930E-80B	5.000	0.387	0.375	0.367	0.142	0.265	

Part Number	Bore Dia. C +0.025 -0.000	Groove Depth A +0.002 -0.000	Groove Width D +0.005 -0.000	Seal Width	Seal Wall	Expander Cross Sect	Price
AS960E-56B	3.500	0.387	0.375	0.367	0.142	0.265	
AS960E-64B	4.000	0.387	0.375	0.367	0.142	0.265	
AS960E-72B	4.500	0.387	0.375	0.367	0.142	0.265	
AS960E-80B	5.000	0.387	0.375	0.367	0.142	0.265	

Pressure Seals Inc. 81 Commerce Way, South Windsor, CT 06074

Phone: (877)-PSI-SEAL Toll Free, In CT: (860) 282-9100, Fax: (860) 282-9001