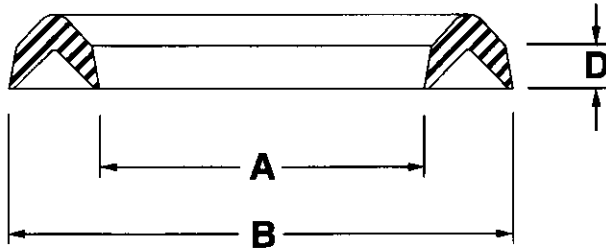




AN Style Homogeneous Vees



This short profile 90 durometer nitrile vee is used in sets for pneumatic and hydraulic applications. Normally they are stacked together or in conjunction with leather or TFE vees of the same profile for hydraulic applications. This profile is also available in other compounds including Viton, EPR, TFE and Leather. Consult sales office for price and availability.

Part Number	Inside Dia. A	Outside Dia. B	Stack Height D	Price
6225-1 N90	1/8	1/2	.083	
6225-2 N90	3/16	9/16	.083	
6225-3 N90	1/4	5/8	.083	
6225-4 N90	5/16	11/16	.083	
6225-5 N90	3/8	3/4	.083	
6225-6 N90	7/16	13/16	.083	
6225-7 N90	1/2	7/8	.083	
6225-8 N90	1/4	3/4	.083	
6225-9 N90	5/16	13/16	.083	
6225-10 N90	3/8	7/8	.083	
6225-11 N90	7/16	15/16	.083	
6225-12 N90	1/2	1	.083	
6225-13 N90	9/16	1-1/16	.083	
6225-14 N90	5/8	1-1/8	.083	
6225-15 N90	11/16	1-3/16	.083	
6225-16 N90	3/4	1-1/4	.083	
6225-17 N90	13/16	1-5/16	.083	
6225-18 N90	7/8	1-3/8	.083	
6225-19 N90	15/16	1-7/16	.083	
6225-20 N90	1	1-1/2	.083	
6225-21 N90	1-1/16	1-9/16	.083	
6225-22 N90	1-1/8	1-5/8	.083	
6225-23 N90	1-3/16	1-11/16	.083	
6225-24 N90	1-1/4	1-3/4	.083	
6225-25 N90	1-1/4	1-7/8	.140	
6225-26 N90	1-3/8	2	.140	
6225-27 N90	1-1/2	2-1/8	.140	
6225-28 N90	1-5/8	2-1/4	.140	
6225-29 N90	1-3/4	2-3/8	.140	
6225-30 N90	1-7/8	2-1/2	.140	
6225-31 N90	2	2-5/8	.140	
6225-32 N90	2-1/8	2-3/4	.140	
6225-33 N90	2-1/4	2-7/8	.140	
6225-34 N90	2-3/8	3	.140	
6225-35 N90	2-1/2	3-1/8	.140	

Part Number	Inside Dia. A	Outside Dia. B	Stack Height D	Price
6225-36 N90	2-1/2	3-1/4	.156	
6225-37 N90	2-5/8	3-3/8	.156	
6225-38 N90	2-3/4	3-1/2	.156	
6225-39 N90	2-7/8	3-5/8	.156	
6225-40 N90	3	3-3/4	.156	
6225-41 N90	3-1/8	3-7/8	.156	
6225-42 N90	3-1/4	4	.156	
6225-43 N90	3-3/8	4-1/8	.156	
6225-44 N90	3-1/2	4-1/4	.156	
6225-45 N90	3-5/8	4-3/8	.156	
6225-46 N90	3-3/4	4-1/2	.156	
6225-47 N90	3-7/8	4-5/8	.156	
6225-48 N90	3-7/8	4-3/4	.197	
6225-49 N90	4	4-7/8	.197	
6225-50 N90	4-1/4	5-1/8	.197	
6225-51 N90	4-1/2	5-3/8	.197	
6225-52 N90	4-3/4	5-5/8	.197	
6225-53 N90	5	5-7/8	.197	
6225-54 N90	5-1/4	6-1/8	.197	
6225-55 N90	5-1/2	6-3/8	.197	
6225-56 N90	5-1/2	6-1/2	.197	
6225-57 N90	5-3/4	6-3/4	.197	
6225-58 N90	6	7	.197	
6225-59 N90	6-1/4	7-1/4	.197	
6225-60 N90	6-1/2	7-1/2	.197	
6225-61 N90	7-1/4	7-3/4	.197	
6225-62 N90	7	8	.197	
6225-63 N90	7-1/4	8-1/4	.197	
6225-64 N90	7-1/2	8-1/2	.197	
6225-66 N90	8	9	.197	
6225-67 N90	8-1/2	9-1/2	.197	
6225-68 N90	9	10	.197	
6225-70 N90	10	11	.197	
6225-76 N90	13	14	.197	